

# DOT FUNDING OPPORTUNITIES FOR TRANSPORTATION ASSETS

- **Meredith Bridgers: Outdoor Recreation Planner, IWR**
- **Lynn Neher: NRM Program Manager, MVD**
- **Tom Ibsen: Chief of Natural Resources, NWP**
- **Kelly Thomas: Chief of Natural Resources, MVR**

*"The views, opinions and findings contained in this report are those of the authors(s) and should not be construed as an official Department of the Army position, policy or decision, unless so designated by other official documentation."*

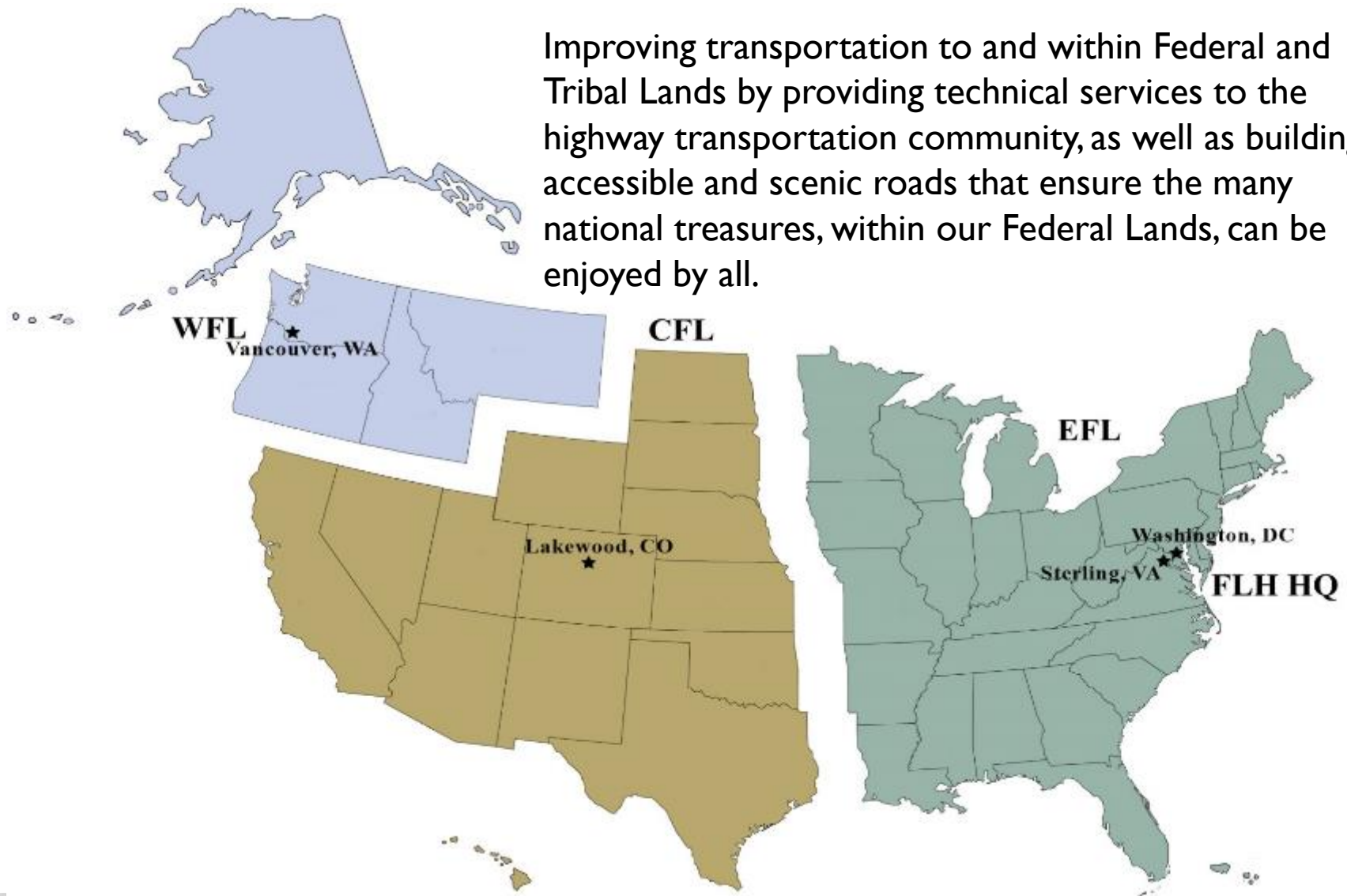


**US Army Corps  
of Engineers®**



# Federal Lands Highways Mission

Improving transportation to and within Federal and Tribal Lands by providing technical services to the highway transportation community, as well as building accessible and scenic roads that ensure the many national treasures, within our Federal Lands, can be enjoyed by all.



# History of Federal Transportation Funding

- Federal Aid Road Act of 1916 began this process
- Multiple subsequent highway and transportation funding acts, typically on a 3-5 year cycle
- Moving Ahead for Progress in the 21<sup>st</sup> Century (MAP-21) in 2012, FY13-FY15
- Fixing America's Surface Transportation (FAST) Act in 2015, FY16-FY20



US Army Corps  
of Engineers ®



# Federal Lands & Tribal Programs

Under the FAST Act (FY16-FY20)

Federal Lands Program	Average Annual Funding (millions)*	Change from FY 2015
Federal Lands Transportation Program	\$ 355	+18.3%
National Park Service	[284]	
Fish & Wildlife Service	[30]	
Forest Service	[17]	
Remainder (competitive USACE, BLM, BOR & Independent Federal Land Managers)	[24]	
Federal Lands Access Program	260	+4.0
Tribal Transportation Program	485	+7.8
Nationally Significant Federal Lands and Tribal Projects (General Fund)   NEW	100	+100

\* Under the FAST Act, some programs increase in funding each year, the numbers presented are the average over the 5 year life of the FAST Act.



US Army Corps  
of Engineers ®



# Federal/Tribal Lands Program Changes

From Map-21 to the FAST Act

- **Tribal Transportation Program**
  - ▶ Less funding for BIA/FHWA oversight; more funding for tribal bridges
  - ▶ New annual reporting by Tribes
- **Federal Lands Transportation Program**
  - ▶ New partners: Bureau of Reclamation and other independent agencies
  - ▶ Dedicated funds for Park Service, Fish & Wildlife, Forest Service | **NEW**
- **Emergency Relief**
  - ▶ Clarified eligibility for debris removal on ERFO-eligible facilities
  - ▶ Access program facilities no longer eligible for 100% Federal share
- **Nationally Significant Federal Lands & Tribal Projects | **NEW****
  - ▶ Discretionary grants for large Federal and tribal lands projects
  - ▶ Subject to appropriation, no appropriations have been made yet



US Army Corps  
of Engineers ®



# Federal Lands Transportation Program

- The FAST Act reserves the majority of FLTP funding for designated Federal agencies:
  - ▶ \$268-\$300 million per fiscal year for the National Park Service;
  - ▶ \$30 million per fiscal year for the U.S. Fish and Wildlife Service; and
  - ▶ \$15-\$19 million per fiscal year for the U.S. Forest Service
- FHWA will allocate the remaining FLTP funds competitively among:
  - ▶ The Bureau of Land Management;
  - ▶ The U.S. Army Corps of Engineers;
  - ▶ The Bureau of Reclamation; and
  - ▶ Independent Federal agencies with natural resource and land management responsibilities (such as The Presidio).



US Army Corps  
of Engineers ®



# FLTP - USACE Implementation

- Road/parking improvements at highly visited recreation areas to address backlog maintenance where condition negatively impacts public access and use of areas
  - ▶ Road/parking projects not generally competitive in USACE budget process.
- Bridge program work for compliance with NBIS and FHWA Guidelines. FLTP allows improvements to bridges at CW projects that support public safety, recreation access and regional economies.

Year	Planning	Program	Total
FY13	\$ 2,000,000	\$ 3,209,040	\$ 5,209,040
FY14	\$ 2,000,000	\$ 5,875,407	\$ 7,875,407
FY15	\$ 2,350,000	\$ 6,210,000	\$ 8,560,000
FY16	\$ 2,350,000	\$ 7,008,035	\$ 9,358,035
FY17	\$ 2,323,000	\$ 6,381,927	\$ 8,704,927
Total	\$11,023,000	\$ 22,302,482	\$ 39,707,409

# Recreation Roads FLTP Activity

- Pilot approach – FY13-15, Under Map-21
  - ▶ 1 Division per year - SAD (FY13), MVD (FY14) & SWD (FY15).
  - ▶ Total of over 48 miles of roads and associated parking in 24 areas with over 3M visits
  - ▶ Structure & execute all phases of program; build understanding of FLH expectations
  - ▶ Concurrently build capacity for national implementation
- FY16 & Beyond - National Implementation, under FAST Act
  - ▶ Use Rec performance metrics to prioritize projects submitted by each MSC (POD temporarily excluded) resulting in 5-year project list with 46 improvement projects (subject to annual funding levels)
- Planning Funded Activity
  - ▶ Road Inventory - Updated data definitions in OMBIL allow for discrete reporting of public roads. GIS based road inventory data collection.
  - ▶ Coordination with OCA team on FLH approved condition evaluation methodology





# Federal Lands Access Program

- The goal of the Federal Lands Access Program (Access Program or FLAP) is to improve transportation facilities that provide access to, are adjacent to, or are located within Federal lands.
  - ▶ Federal Lands Access Transportation Facility (FLATF)
- The Access Program supplements State and local resources in 50 States, DC and Puerto Rico
- Compliments other Federal Programs
  - ▶ Defense Access Roads
  - ▶ Forest Development Roads and Trails
  - ▶ Federal Lands Transportation Program
- State or Local Governments are eligible applicants
- 20% match required, can be in-kind



US Army Corps  
of Engineers ®



# FLAP Eligible Activities

Transportation planning, research, engineering, preventative maintenance, rehabilitation, restoration, construction, and reconstruction of FLATFs located on, adjacent to, or that provide access to, Federal lands, and:

- ▶ Adjacent vehicular parking areas
- ▶ Acquisition of necessary scenic easements and scenic or historic sites
- ▶ Provisions for pedestrians and bicycles
- ▶ Environmental mitigation in or adjacent to Federal land to improve public safety and reduce vehicle-caused wildlife mortality while maintaining habitat connectivity
- ▶ Construction and reconstruction of roadside rest areas, including sanitary and water facilities, and
- ▶ Other appropriate public road facilities, as determined by the Secretary
- ▶ Transit facilities (stops, shelters, buses, etc.)



US Army Corps  
of Engineers ®



# Access Program Funding

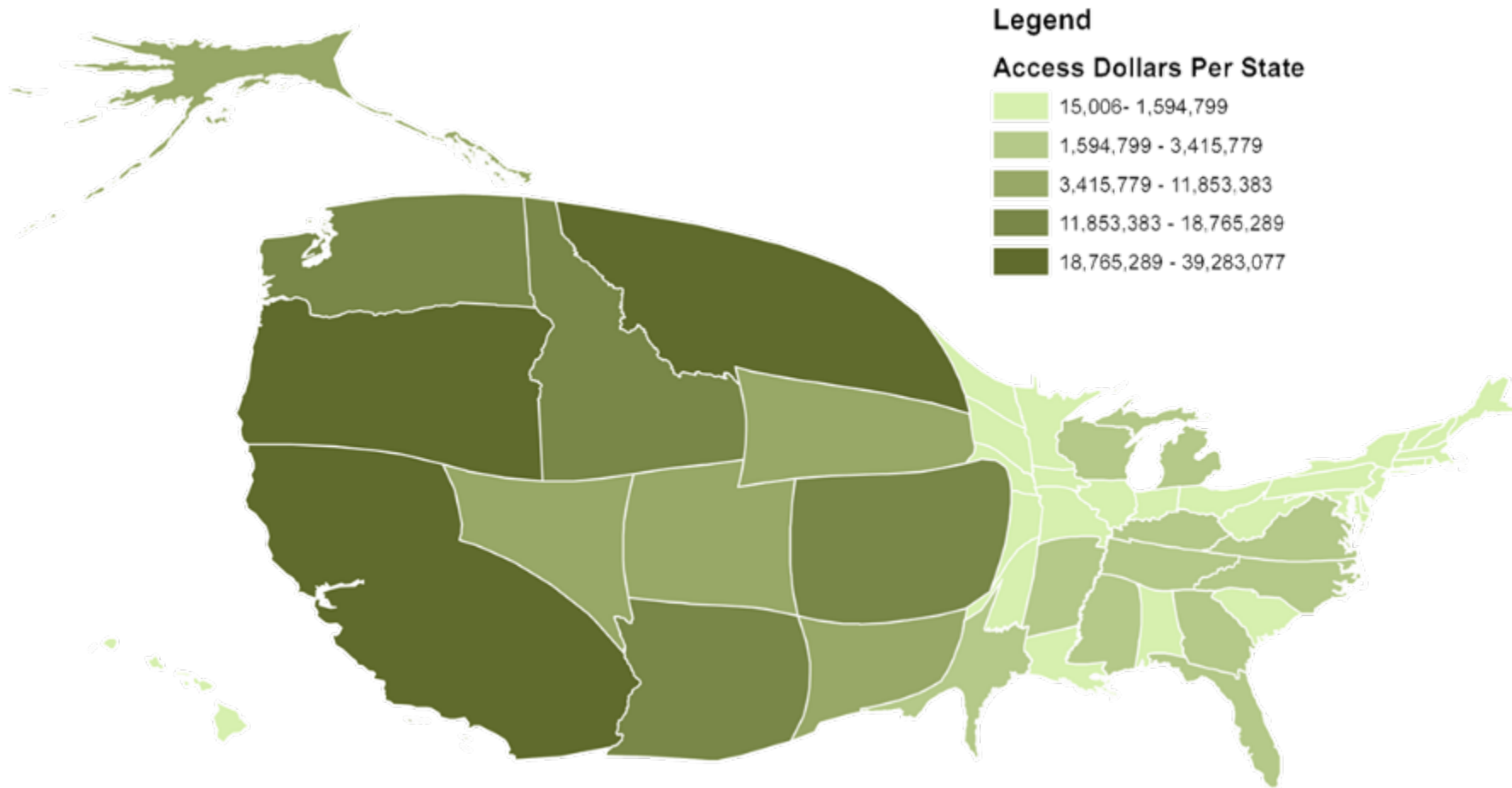
- Funds are distributed by formula among States that have Federal lands managed by the National Park Service, the U.S. Forest Service, the U.S. Fish and Wildlife Service, the Bureau of Land Management, and the U.S. Army Corps of Engineers.
- 80% of the total annual authorization go to States that contain at least 1.5% of the national total of public lands, with the remaining 20% going to the other 38 States, DC and Puerto Rico (i.e. with less than 1.5% of the national total).



US Army Corps  
of Engineers ®



# Access Program Dollars by State



**Sources:**

State Shapefile: US Census

Access Dollars: FLHD, Access Program Funding Table Dated 10/26/2012

Puerto Rico is not represented, but will receive around \$78,000 per year in Access Funds



US Army Corps  
of Engineers ®



# FLAP Matching Funds

- ◆ Local Match Requirement: 20% of total project cost with sliding scale
- ◆ Other Federal agency funds (**non-title 23 or 49**) may be used as match. Hard matches are in the form of cash (preferred)
  - ◆ Match Exception- FLTP and TTP funds may be used
  - ◆ Access funds may **NOT** be used to match other Federal-Aid program funds
- ◆ “Soft-matches” or “in-kind matches” are permitted if approved by the FLAP PDC; Typically follows State Federal Aid guidelines for match
  - ◆ Soft match examples: toll credits, labor for Preliminary Engineering/NEPA/Permitting, CEI, right-of-way/easements, equipment rental valued at fair market price
- ◆ Match funds must be generated and applied **after** a project agreement is signed.
- ◆ An FLH Project Management fee (S&O costs, typically 2-8% of total project cost) may be added to the project budget and will require a match.



US Army Corps  
of Engineers ®



# FLAP Evaluation Criteria

- Endorsed by pertinent Federal agency as a high priority?
- High-use Federal facility/Federal economic generator?
  - Use corpsresults.us data
- Consistent with State's PDC goals?
- Project sponsor can provide the required 20% match?
- Realistic scope, schedule, and budget?

## Additional Factors:

- Safety
  - Accessibility & Mobility
  - Preservation
  - Environmental Quality & Sustainability
- 
- Federal Lands Access Program
    - ▶ <https://flh.fhwa.dot.gov/programs/flap/>



US Army Corps  
of Engineers ®



# Transportation Alternatives Program

- Set-Aside from the Surface Transportation Block Grant program
  - Annual amount augments under FAST Act to \$850 M in FY20
- Eligible projects include:
  - On- and off-road pedestrian and bicycle facilities, includes rail-trails
  - Turnouts, overlooks, and viewing areas
  - Preservation of historic transportation facilities
  - Vegetation management (safety, control invasive species and erosion)
  - Environmental mitigation related to stormwater and maintain habitat connectivity
  - Recreational trail projects
  - Safe routes to school projects
- Funds provided to States and large metro areas by formula.
- DOT encourages project sponsors to use qualified youth service and conservation corps.



# Transportation Alternatives... Continued

- Applicant: Projects must be submitted by “eligible entities”
  - Federal or state transportation or natural resource management agencies are eligible
  - Can submit in collaboration with other entities
  - Each State and large MPO has its own competitive project selection process.
  - On state DOT website, search “Transportation Alternatives” for information and application cycles.
- Match: can vary based on project, typically 20%
- Transportation Alternatives Program
  - ▶ [https://www.fhwa.dot.gov/environment/transportation\\_alternatives/](https://www.fhwa.dot.gov/environment/transportation_alternatives/)
  - ▶ <http://trade.railstotrails.org/index>
- Recreational Trails Program is a separate process, see State contacts at [www.fhwa.dot.gov/environment/recreational\\_trails/](http://www.fhwa.dot.gov/environment/recreational_trails/)



US Army Corps  
of Engineers ®





# Emergency Relief For Federally Owned Roads

- Established to assist federal agencies with the repair or reconstruction of public federal lands transportation facilities, and other federally owned public roads, which are found to have suffered serious damage by a natural disaster over a wide area or by a catastrophic failure.
  - Is not intended to cover all repair costs, nor upgrade facilities.... restore to pre-disaster conditions.
  - Intent notification required step (within 45 days of event)
  - Emergency repairs completed within 180 days (100% DOT funds) or permanent repairs (100% DOT funds)
  - Actual funding provided or reimbursed based on eligibility and annual ERFO fund request process (can involve congressional authorizations)



US Army Corps  
of Engineers ®



# Emergency Relief For Federally Owned Roads... *Continued*

- There is a complimentary program for states (Federal-aid highway Emergency Relief (ER) Program).
  - Some federal roads are also Federal-Aid highways, need to coordinate with State regarding which program to use
- Funding Thresholds
  - \$700,000 per event
  - \$5,000 per site repaired
- Online training available
  - <https://flh.fhwa.dot.gov/programs/erfo/training/>
  - ERFO staff also willing to offer regional training sessions in person (pending minimum class sizes)
- <https://flh.fhwa.dot.gov/programs/erfo/>



US Army Corps  
of Engineers ®



# Other DOT Grant Programs

## ■ FASTLANE

- ▶ Funding to address nationally or regionally significant transportation projects, with a focus on freight and highway improvements that generate economic benefits, reduce congestion, etc
- ▶ Applicant – State, Federal agency applying jointly with state(s), multijurisdictional group of public entities
- ▶ Match: 60% (DOT) /40% (match)
- ▶ Last project call was Dec 2016, future calls unsure
- ▶ <https://www.transportation.gov/buildamerica/FASTLANEgrants>



US Army Corps  
of Engineers ®



# Other DOT Grant Programs

## ■ TIGER

- ▶ Innovative projects, including multi-modal and multi-jurisdictional projects, which are difficult to fund through traditional federal programs
  - Highway/bridge projects, bike/ped projects, public transportation, port infrastructure investments, intermodal projects, etc
- ▶ Applicant – State or local governments,
- ▶ Match: 80% (DOT) /20% (match)
- ▶ Last project call was Feb 2016, future calls unsure
- ▶ <https://www.transportation.gov/tiger>



US Army Corps  
of Engineers ®



# Other DOT Grant Programs

- Highway Safety Grants
  - ▶ NHTSA awards grants for occupant protection, state traffic safety information systems, impaired driving countermeasures, distracted driving, motorcyclist safety and state graduated driver licensing laws.
  - ▶ Applicant – State, process unclear on website
  - ▶ Match: 90-100% (DOT), varies by activity
  - ▶ <https://www.nhtsa.gov/highway-safety-grants-program>
  - ▶ Strong ties to FHWA Highway Safety Improvement Program - <https://safety.fhwa.dot.gov/hsip/>
    - Portion of FHWA funds to states set-aside for safety improvement - <https://www.fhwa.dot.gov/fastact/factsheets/hsipfs.cfm>



US Army Corps  
of Engineers ®



# Other DOT Grant Programs

- Highway Safety Improvement Program
  - Funding to help achieve a significant reduction in traffic fatalities and serious injuries on all public roads, including non-State-owned roads and roads on tribal lands
  - <https://www.fhwa.dot.gov/fastact/factsheets/hsipfs.cfm>
  - FAST Act funding: set aside of \$2.226B - \$2.407B annually; suballocation by state
- ▶ Applicant – Coordinate with State to have project listed on State's Strategic Highway Safety Plan (SHSP) projects listed on State Highway Safety Improvement Plan
- ▶ Match: 90-100% (DOT), varies by activity
- ▶ <https://safety.fhwa.dot.gov/hsip/>



US Army Corps  
of Engineers ®



# POCs for more information

- **Federal Lands Transportation Program**
  - Meredith Bridgers, FLTP Program Manger, Roads
  - Discuss with MSC Recreation BLM regarding projects submitted previously
- **Federal Lands Access Program**
  - See FLH website for FLH Division FLAP Manger/Coordinator
- **Emergency Relief for Federally Owned Roads**
  - See FLH website for FLH Division ERFO Coordinator
- **Transportation Alternatives**
  - See State POC for TA and Recreational Trails programs
- **DOT Main Grants page**
  - <https://www.transportation.gov/grants>



US Army Corps  
of Engineers ®





# QUESTIONS



BEFORE

DURING

AFTER

FLTP Improvement in a USACE Recreation Area



US Army Corps  
of Engineers®

